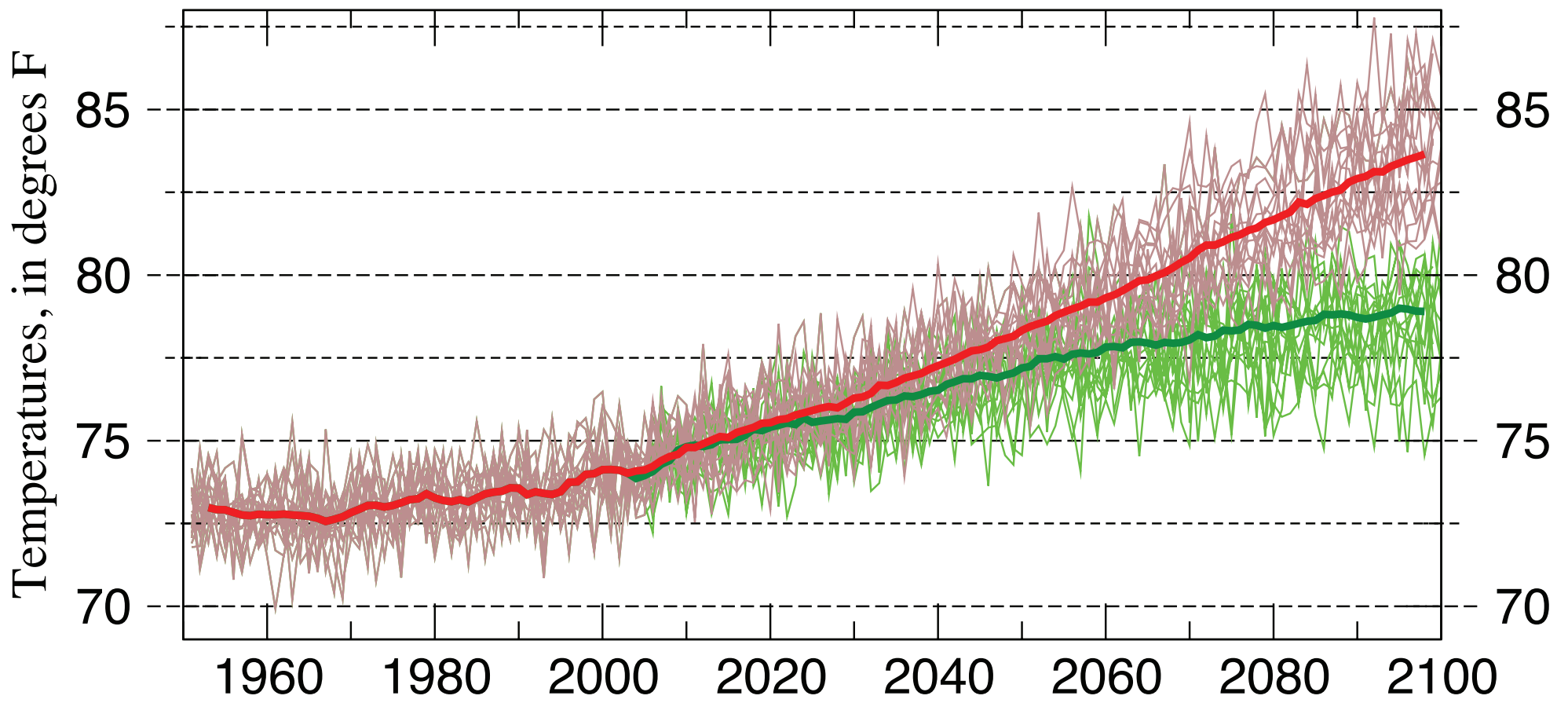


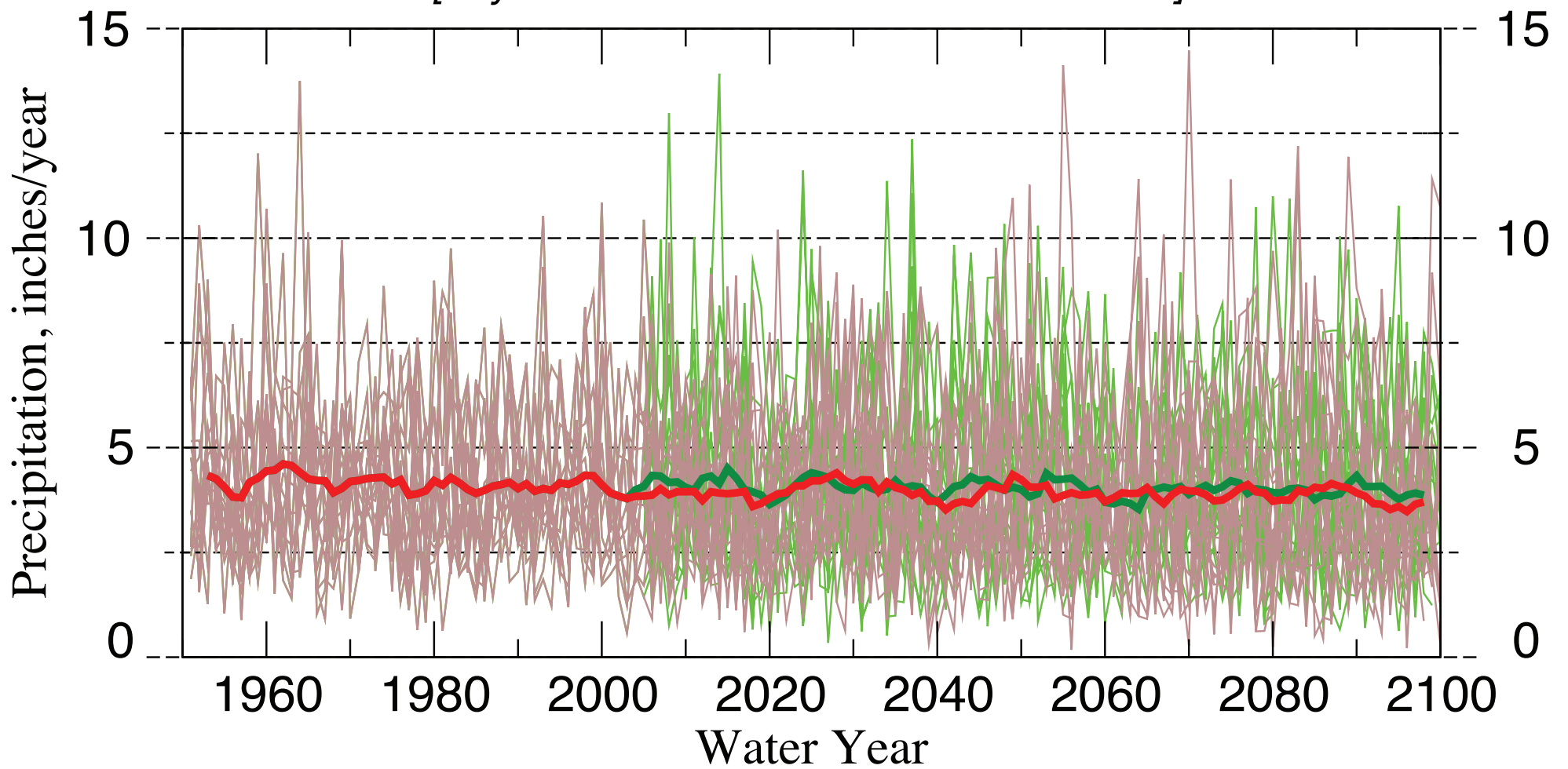
COLORADO RIVER Projections of Temperature

[2/year from each of 15 climate models]



COLORADO RIVER Projections of Precipitation

[2/year from each of 15 climate models]



— Moderating GHG Emissions
— Accelerating GHG Emissions

— Average of 15 moderating projections
— Average of 15 accelerating projections

These are projections of temperatures & precipitation by 15 different climate models (chosen for their reasonably accurate simulations of global & western-US climate statistics during 1950-2005) in response to two different assumptions regarding future greenhouse-gas emissions.

By end of century, all temperatures are projected by climate models to be warmer than the warmest historical years by 0 to 12°F, depending on future greenhouse-gas emissions, while precipitation decreases by about 10%. The extremes of the year-to-year fluctuations of both (especially droughts) are projected to increase markedly as the century progresses.

