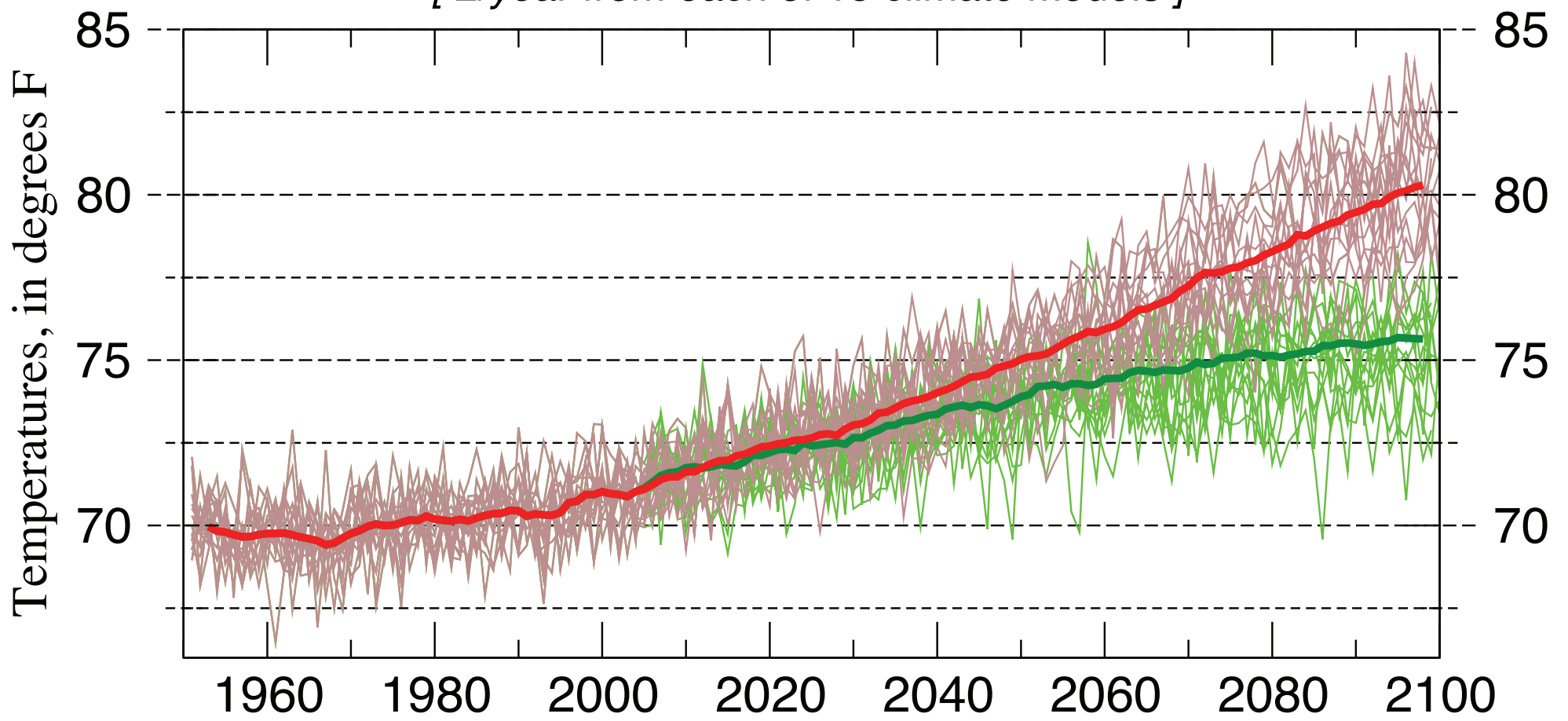


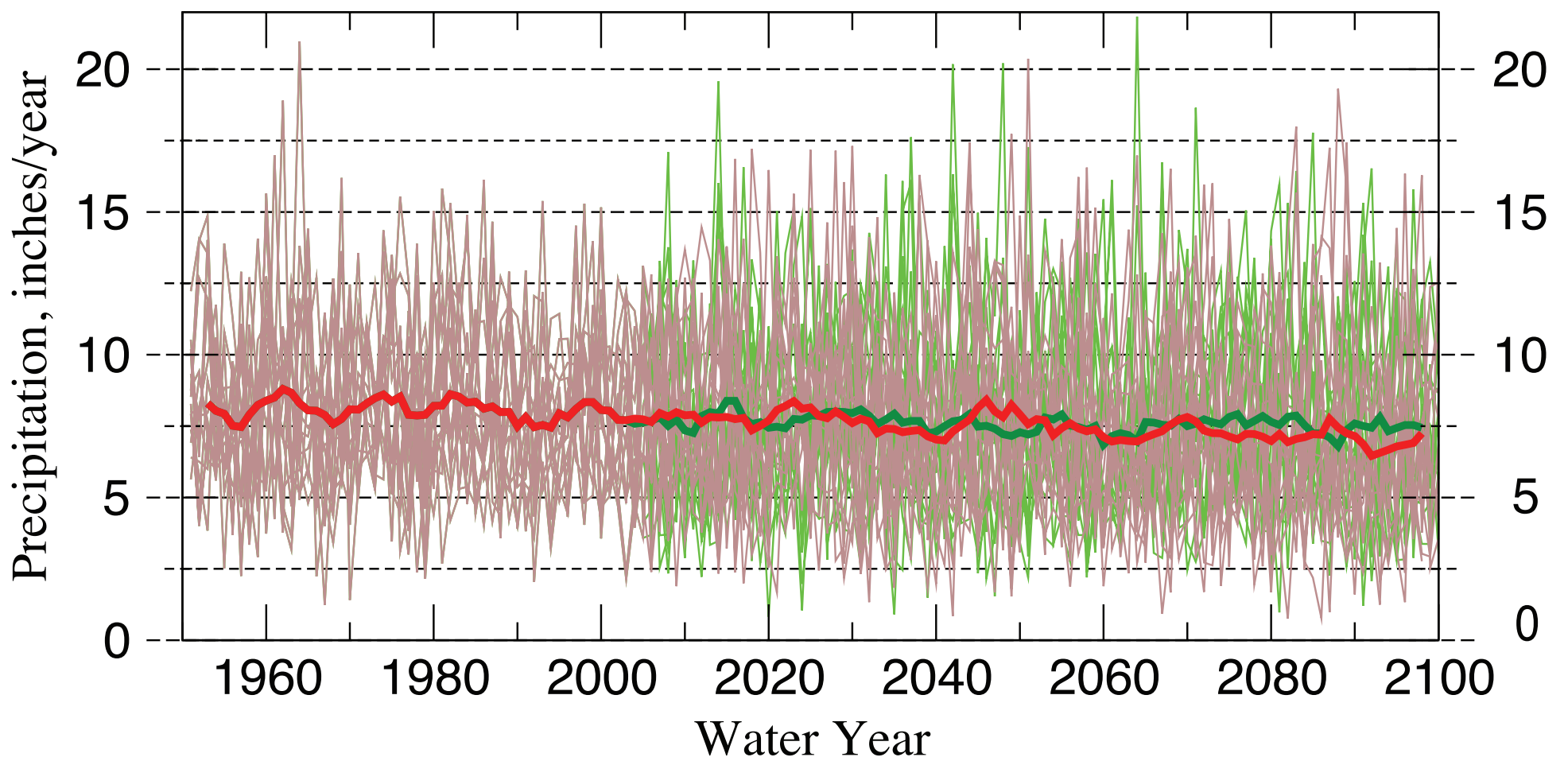
GILA RIVER Projections of Temperature

[2/year from each of 15 climate models]



GILA RIVER Projections of Precipitation

[2/year from each of 15 climate models]



— Moderating GHG Emissions
— Accelerating GHG Emissions

— Average of 15 moderating projections
— Average of 15 accelerating projections

These are projections of temperatures & precipitation by 15 different climate models (chosen for their reasonably accurate simulations of global & western-US climate statistics during 1950-2005) in response to two different assumptions regarding future greenhouse-gas emissions.

By end of century, all annual temperatures are projected by climate models to be anywhere from about 1 to 11°F warmer than the warmest years historically, depending on future greenhouse-gas emissions, while precipitation decreases by about 10%. The extremes of year-to-year fluctuations of both are projected to increase markedly as the century progresses.

