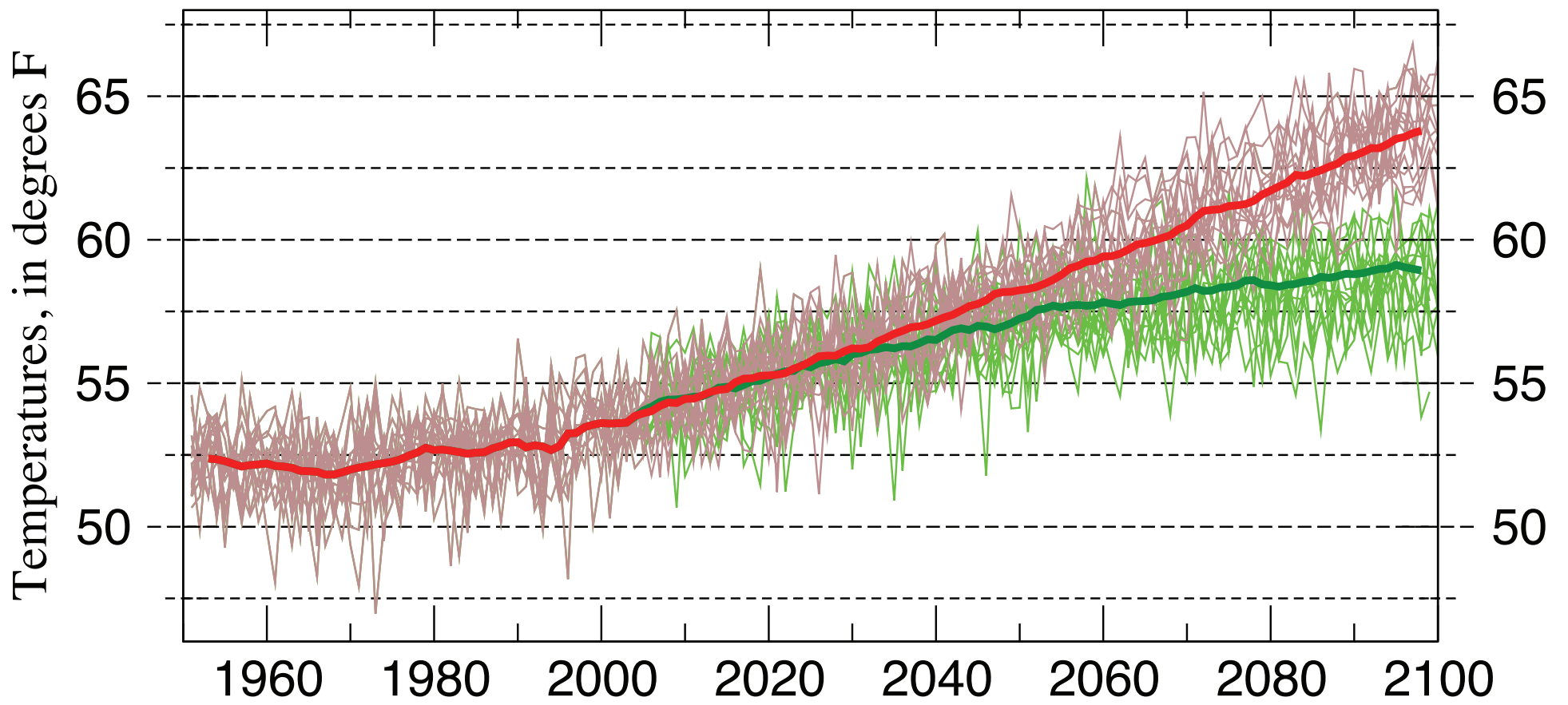
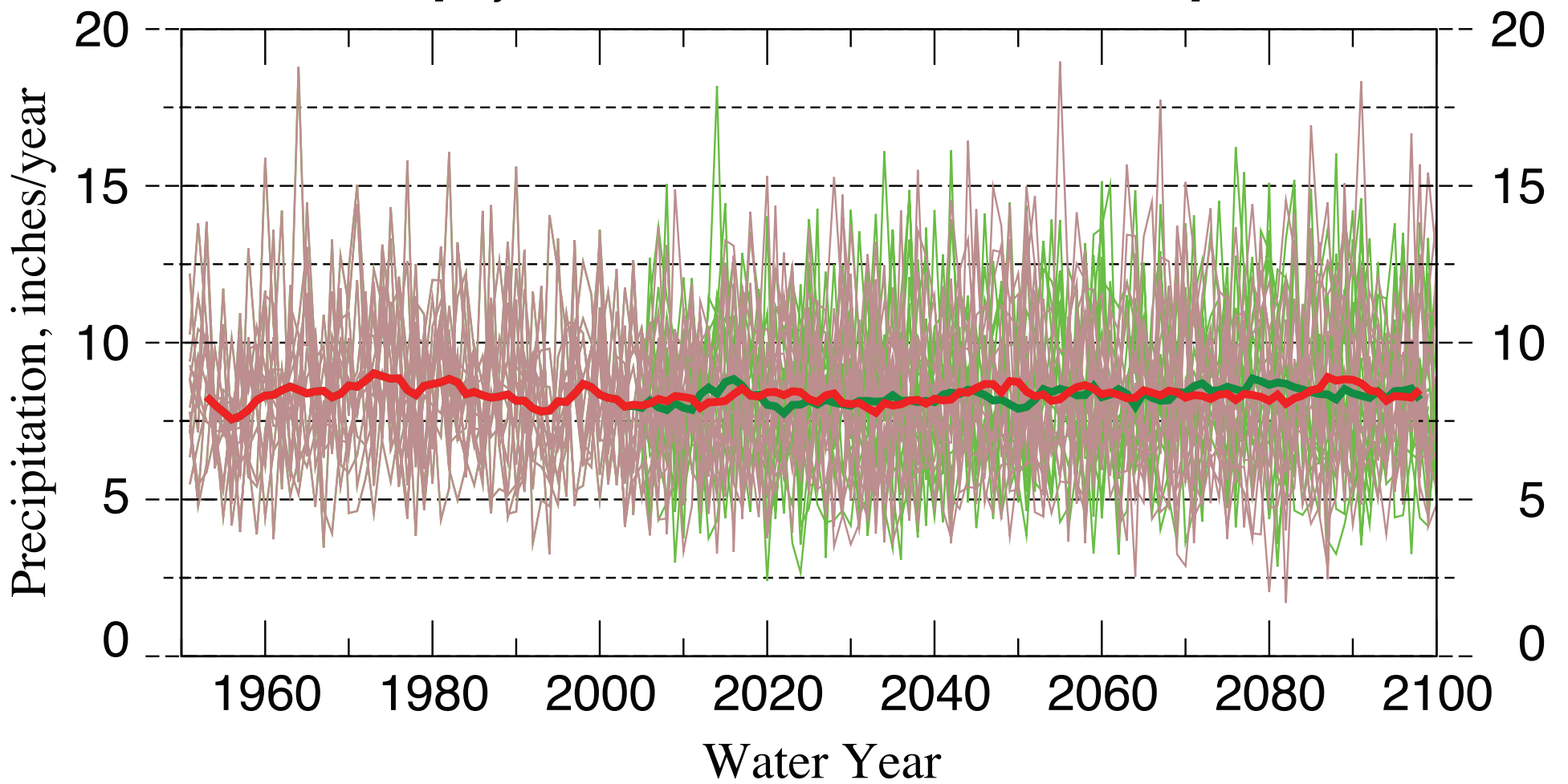


## NAVAJO NATION Projections of Temperature [ 2/year from each of 15 climate models ]



## NAVAJO NATION Projections of Precipitation [ 2/year from each of 15 climate models ]



- |  |  |
|--|--|
| <ul style="list-style-type: none"> <li><span style="color: green;">—</span> Moderating GHG Emissions</li> <li><span style="color: brown;">—</span> Accelerating GHG Emissions</li> </ul> | <ul style="list-style-type: none"> <li><span style="color: green; font-weight: bold;">—</span> Average of 15 moderating projections</li> <li><span style="color: red; font-weight: bold;">—</span> Average of 15 accelerating projections</li> </ul> |
|--|--|

These are projections of temperatures & precipitation by 15 different climate models (chosen for their reasonably accurate simulations of global & western-US climate statistics during 1950-2005) in response to two different assumptions regarding future greenhouse-gas emissions.

By end of century, all annual temperatures are projected by climate models to be anywhere from about 3 to 12°F warmer than the warmest years historically, depending on future greenhouse-gas emissions, while precipitation decreases modestly. The extremes of year-to-year precipitation are projected to increase as the century progresses.

