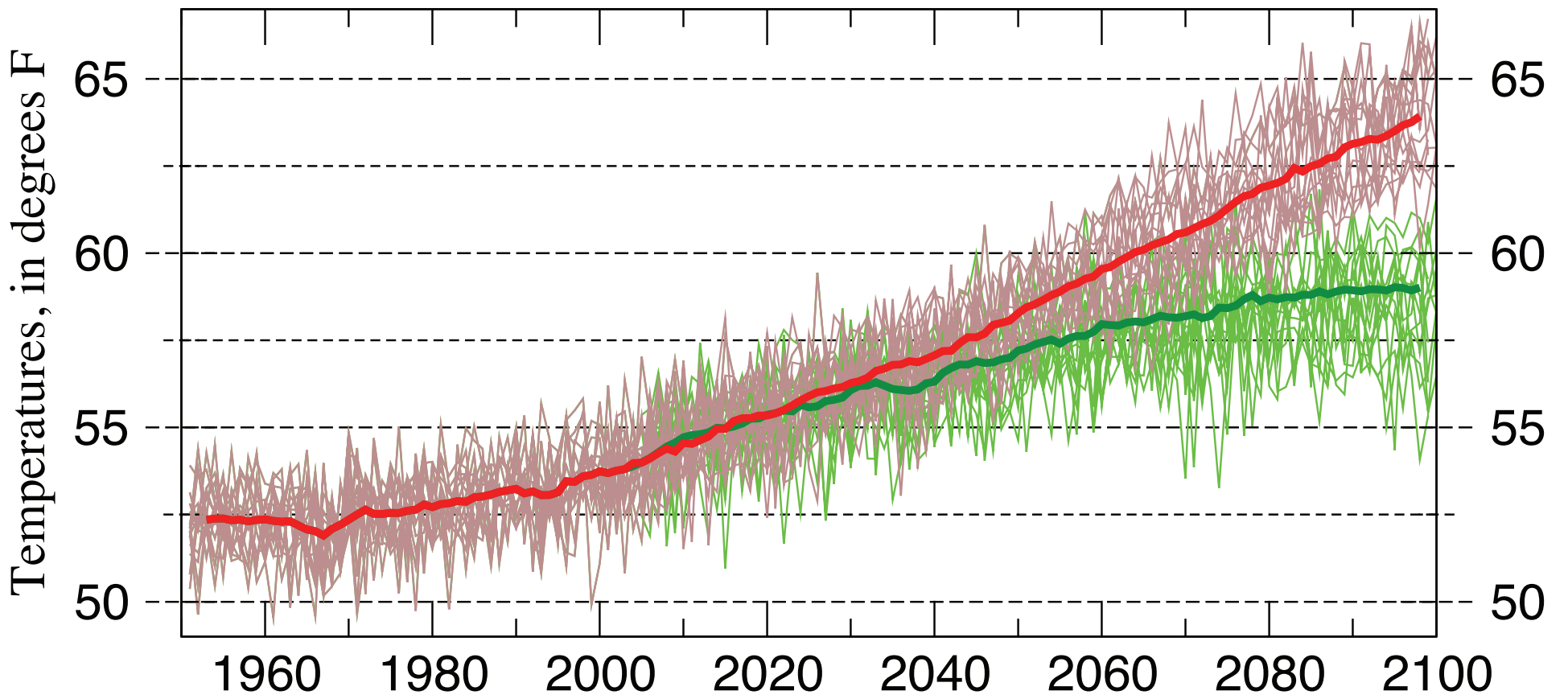
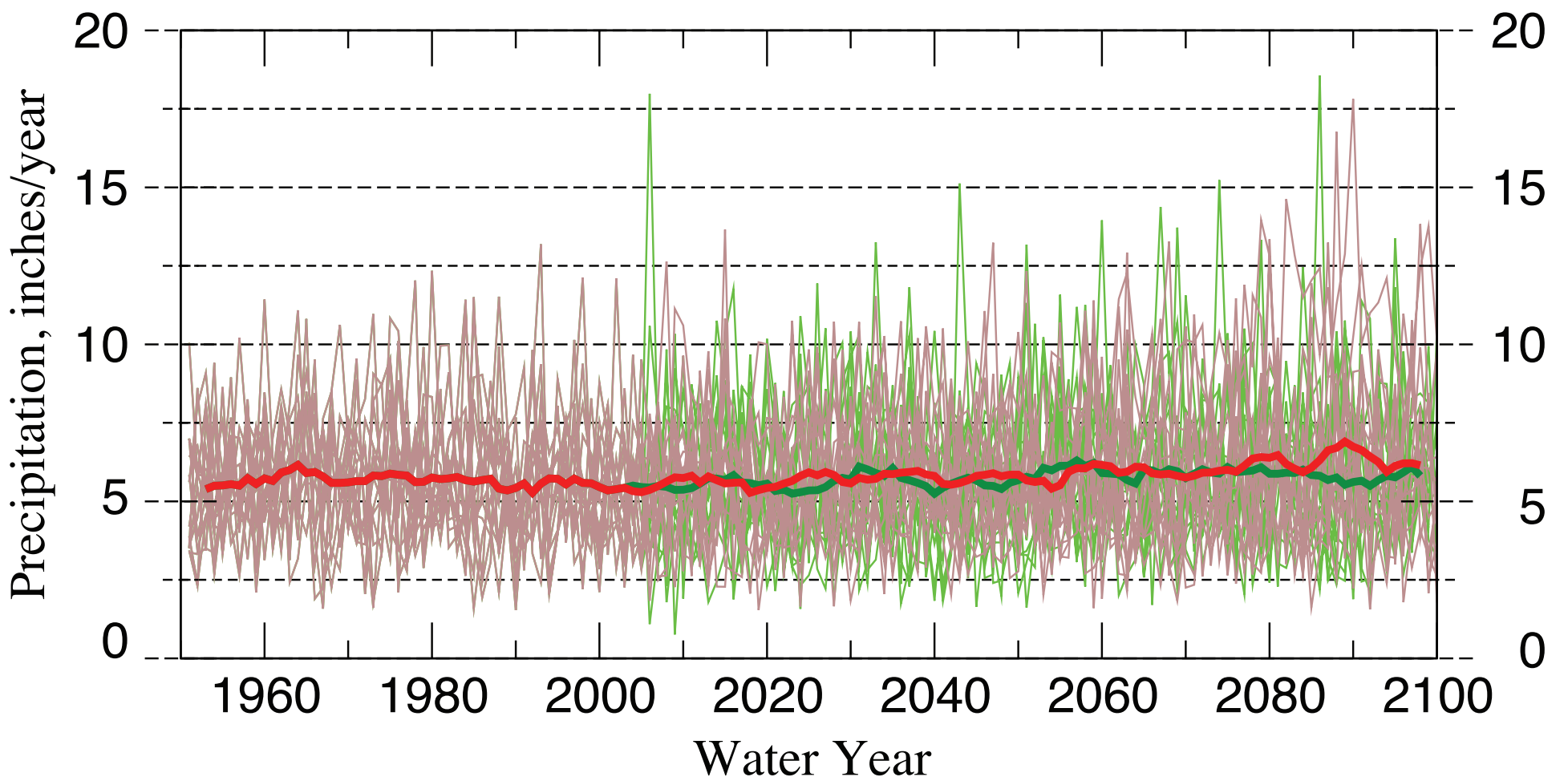


WALKER LAKE Projections of Temperature [2/year from each of 15 climate models]



WALKER LAKE Projections of Precipitation [2/year from each of 15 climate models]



- | | |
|----------------------------|--|
| Moderating GHG Emissions | Average of 15 moderating projections |
| Accelerating GHG Emissions | Average of 15 accelerating projections |

These are projections of temperatures & precipitation by 15 different climate models (chosen for their reasonably accurate simulations of global & western-US climate statistics during 1950-2005) in response to two different assumptions regarding future greenhouse-gas emissions.

By end of century, all annual temperatures are projected by climate models to be anywhere from about 2 to 11°F warmer than the warmest historical years, depending on future greenhouse-gas emissions, while precipitation increases modestly. The extremes of year-to-year precipitation are projected to increase considerably as the century progresses.

