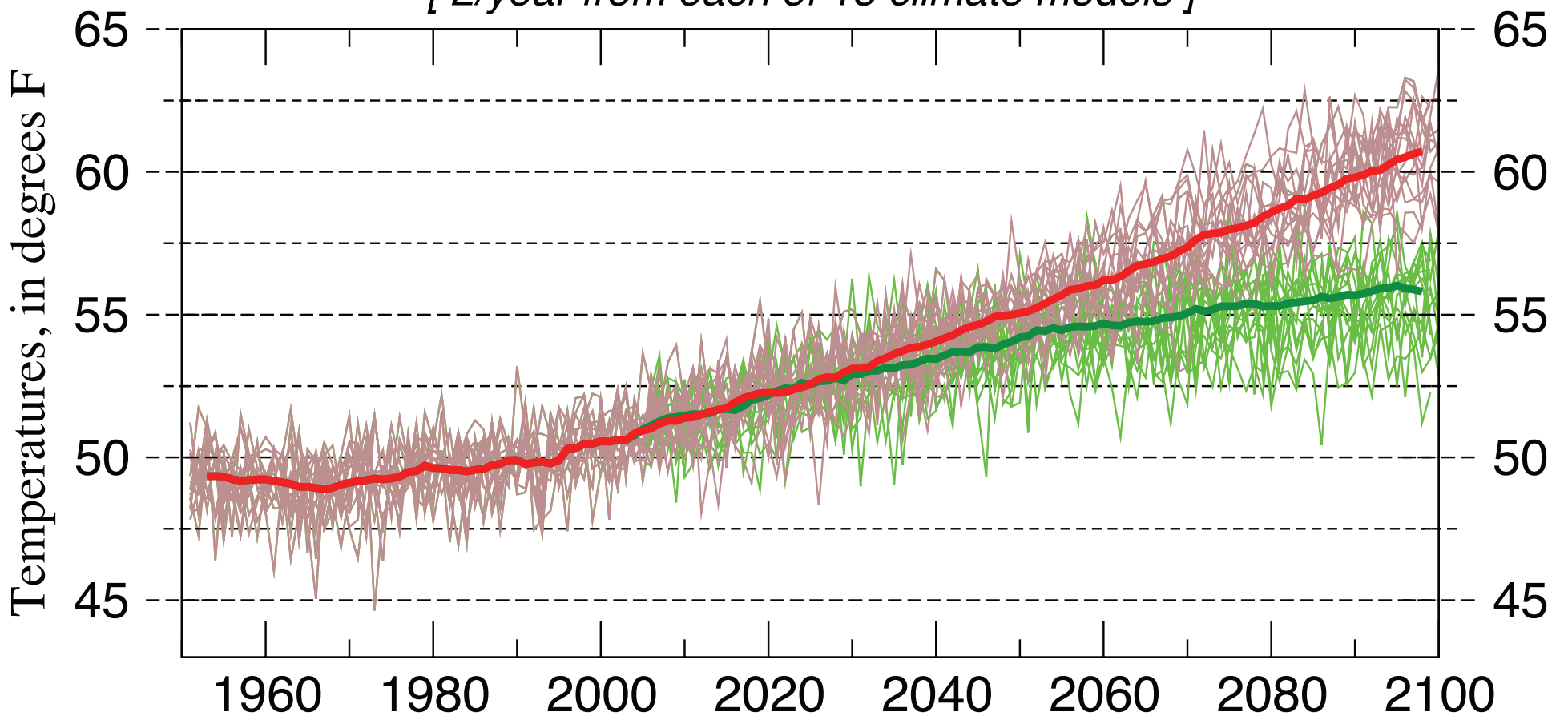
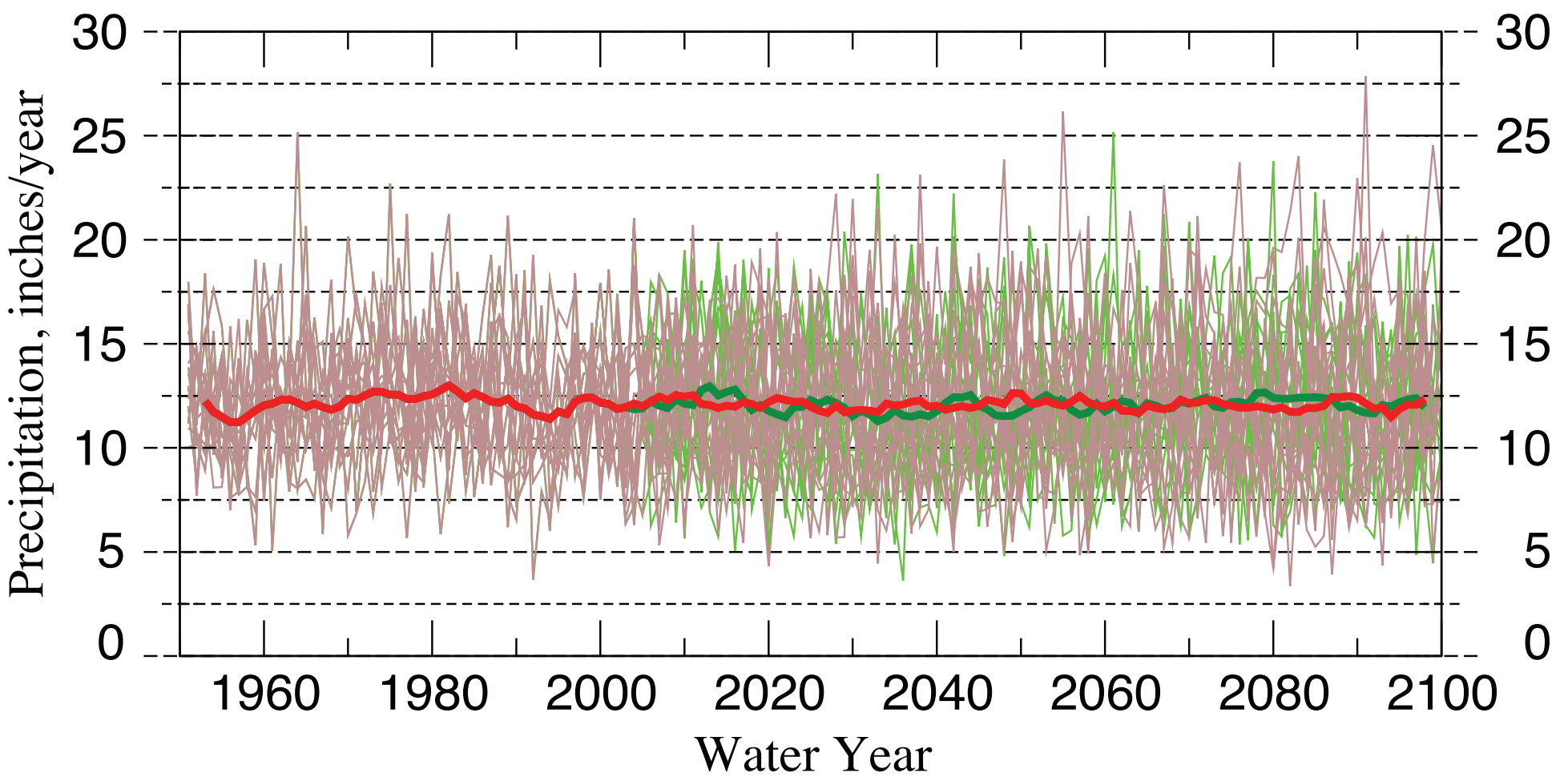


## ZUNI Projections of Temperature [ 2/year from each of 15 climate models ]



## ZUNI Projections of Precipitation [ 2/year from each of 15 climate models ]



- |                            |  |
|----------------------------|--|
| Moderating GHG Emissions   | Average of 15 moderating projections   |
| Accelerating GHG Emissions | Average of 15 accelerating projections |

These are projections of temperatures & precipitation by 15 different climate models (chosen for their reasonably accurate simulations of global & western-US climate statistics during 1950-2005) in response to two different assumptions regarding future greenhouse-gas emissions.

By end of century, all annual temperatures are projected by climate models to be anywhere from about 1 to 10°F warmer than the warmest historical years, depending on future greenhouse-gas emissions, while precipitation decreases modestly. The extremes of year-to-year precipitation are projected to increase considerably as the century progresses.

