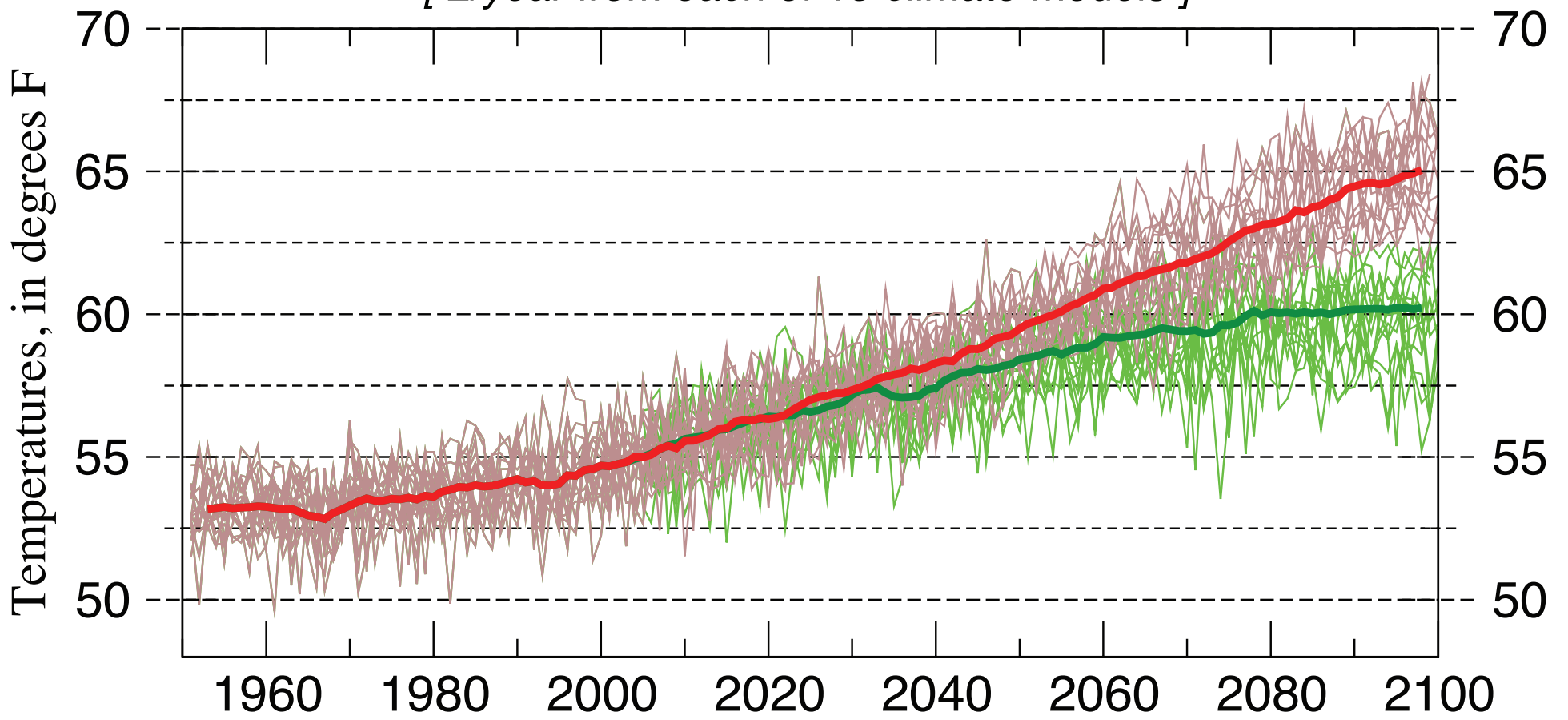


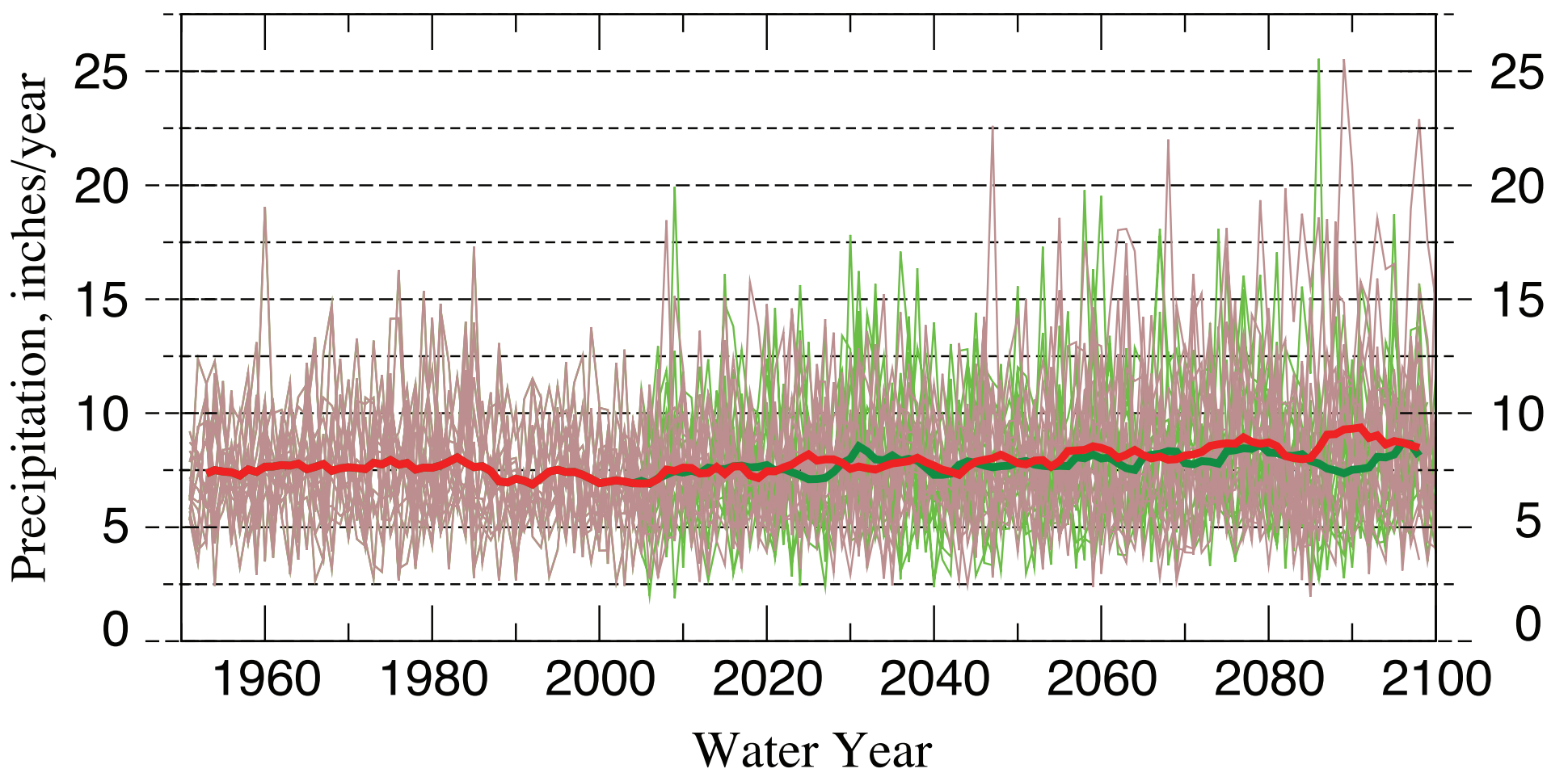
PYRAMID LAKE PAIUTE Projections of Temperature

[2/year from each of 15 climate models]



PYRAMID LAKE PAIUTE Projections of Precipitation

[2/year from each of 15 climate models]



- Moderating GHG Emissions
- Average of 15 moderating projections
- Accelerating GHG Emissions
- Average of 15 accelerating projections

These are projections of temperatures & precipitation by 15 different climate models (chosen for their reasonably accurate simulations of global & western-US climate statistics during 1950-2005) in response to two different assumptions regarding future greenhouse-gas emissions.

By end of century, all annual temperatures are projected by climate models to be anywhere from about 3 to 15°F warmer than the warmest historical years, depending on future greenhouse-gas emissions, while precipitation increases by about 15%. The wettest year-to-year precipitation are projected to increase considerably as the century progresses.

